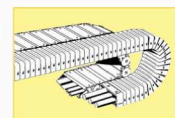


Power chain for UL/CSA application



S 900 CP Continuously flexible PVC/PUR single conductor with overall copper screen

80°C 600V CSA S 900 CP RoHS

>> Construction (케이블구성)

Conductor	bare copper strands acc. to IEC 60228, EN 60228, VDE 0295, class 6
Insulation	PVC, TI 2 acc. to DIN VDE 0281 part1 + HD 21.1
Wrapping	non-woven tape
Screen	tinned copper braiding
Wrapping	non-woven tape
Sheath material	TMPU acc. to DIN VDE 0282 part 10 + HD 22.10 with mat surface
Sheath colour	black (RAL 9005)

>> Technical data (기술사항)

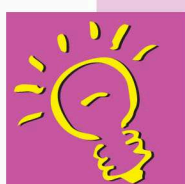
Nominal voltage	DIN VDE : DIN VDE : U ₀ /U 0,6/1kV	
Voltage	UL/CSA : 600V	
Min. bending radius continuously flexible	7,5 x d	
Radiation resistance	5 x 10 ⁷ cJ/kg	
Temperature range fixed laying flexible application	DIN VDE : -40 / +70°C	UL/CSA : up to / +80°C
Fire performance	flame retardant and self-extinguishing acc. to UL + CSA FT1 and FT2	
Oil resistance	very good	
Chem. resistance	good against acids, alkalines, solvents, hydraulic liquids etc.	
Continuous flexibility	very good	
Absence of harmful substances	acc to, RoHS-guideline 2002 / 95 / EG as well as Gefstovf appendix IV-no. 24	

>> Outstanding features (특징)

- ▶ highly flexible single conductor for use in cable tracks
- ▶ good chemical resistance
- ▶ high abrasion resistance

item no.	no. of cores x cross section n x mm ²	largest single wire ø mm	AWG/ MCM	outer-ø ± 5% mm	copper figure kg/km
37692340	1 x 4,00	0,16	12	8,3	54,5
37692360	1 x 6,00	0,21	10	9,2	77,3
37692361	1 x 10,00	0,21	8	10,1	119,7
37692362	1 x 16,00	0,21	6	11,5	182,6
37692363	1 x 25,00	0,21	4	12,9	293,9
37692364	1 x 35,00	0,21	2	14,5	395,7
37692365	1 x 50,00	0,31	1	16,8	577,7
37692366	1 x 70,00	0,31	2/0	18,9	783,2
37692367	1 x 95,00	0,31	3/0	23,9	1051,4
37692368	1 x 120,00	0,31	4/0	24,9	1293,3
37692369	1 x 150,00	0,31	250 MCM	27,6	1611,3

Other dimensions and colours are possible on request.



On request with
**green-yellow
insulation**